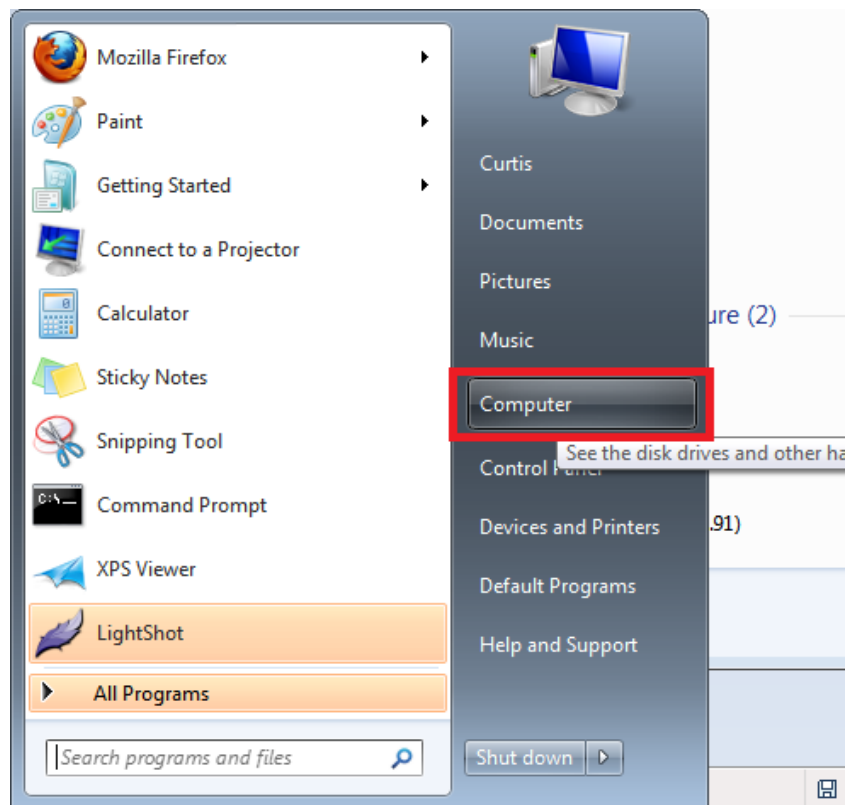
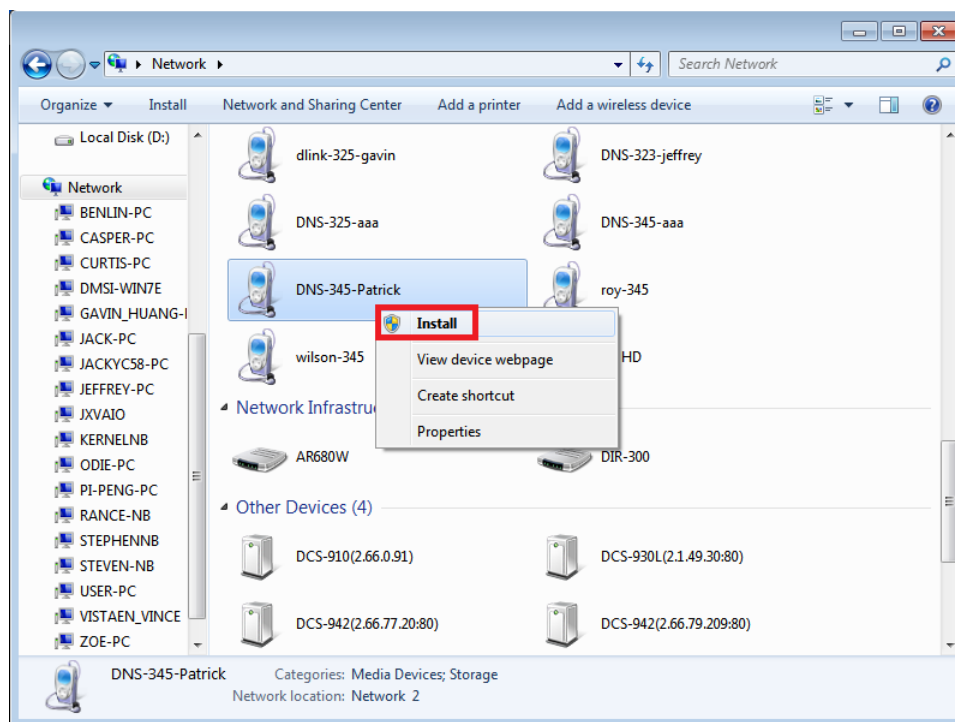


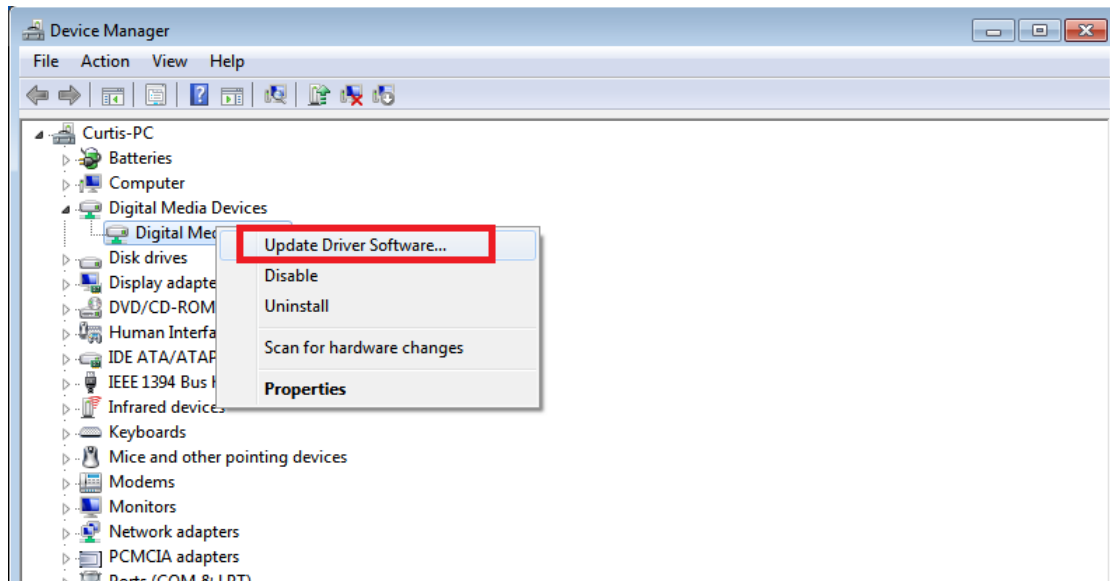
### 1. Select Computer.



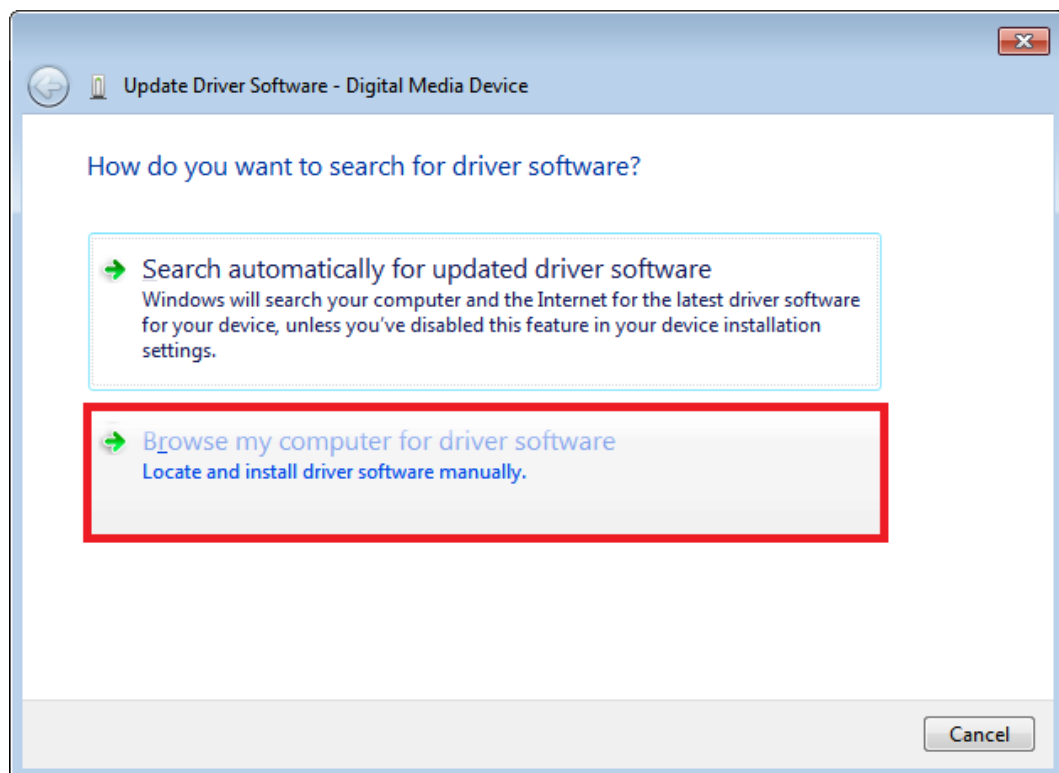
### 2. Install device in the Network.



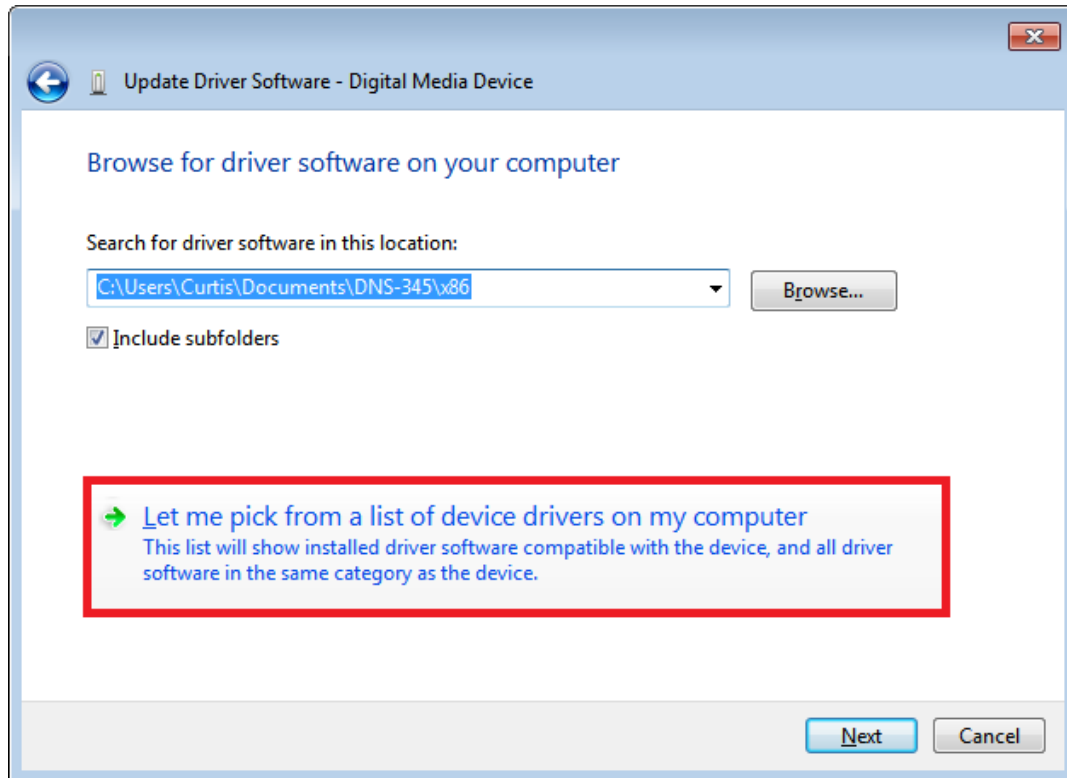
### 3. Open Device Manager and update driver software.



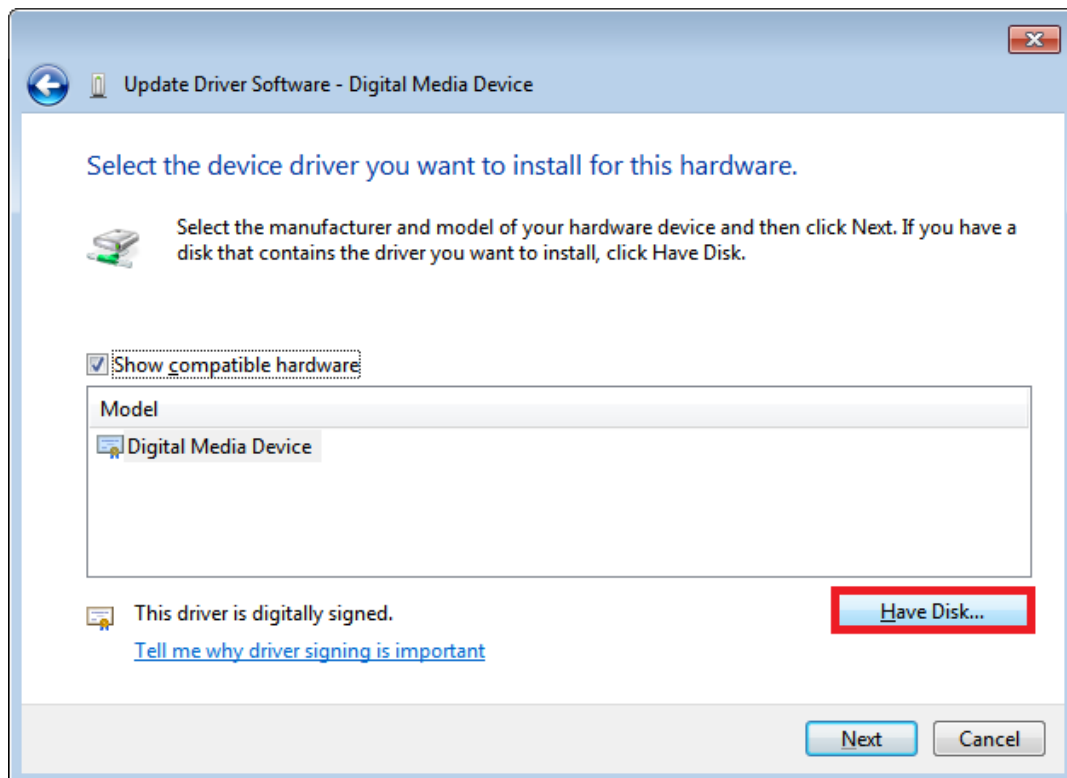
4. Select “Browse my computer for driver software”.



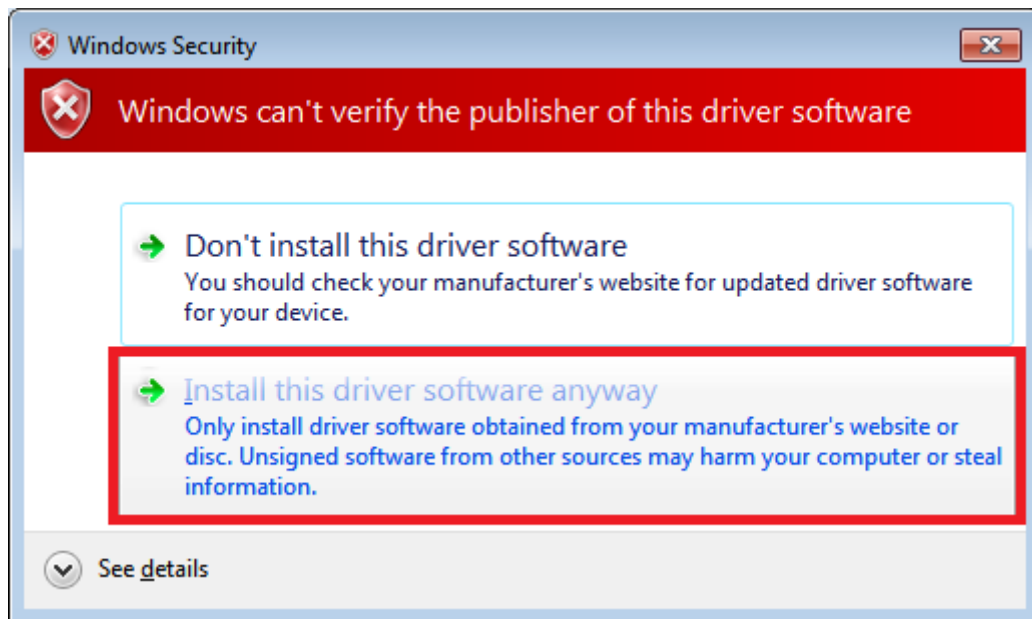
5. Select “Let me pick from a list of device drivers on my computer”.



6. Click "Have Disk" and select the "pnpxnas.inf".



7. Select "Install this driver anyway"



8. Complete the install PnP-X driver

